

# DEVIATORI PNEUMATICI PROPORZIONALI, A 2 E A 3 POSIZIONI

**CODICE FAMIGLIA**  
FAMILY CODE

**100-001-4**

**PNEUMATIC CONTROL SWITCHES:  
PROPORTIONAL, 2 OR 3 POSITION**

**Componibili attacchi laterali**  
Sandwich controls side ports

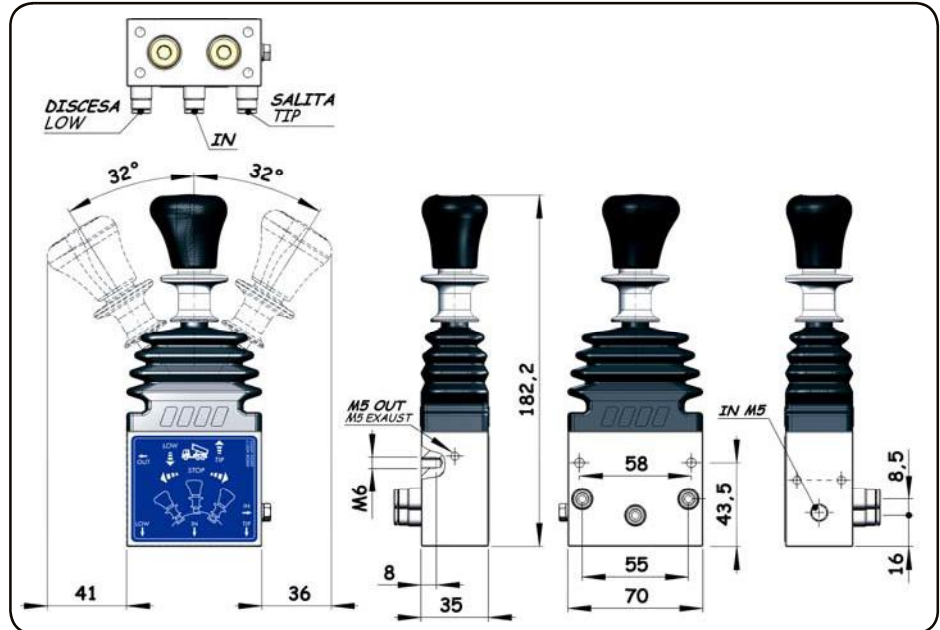
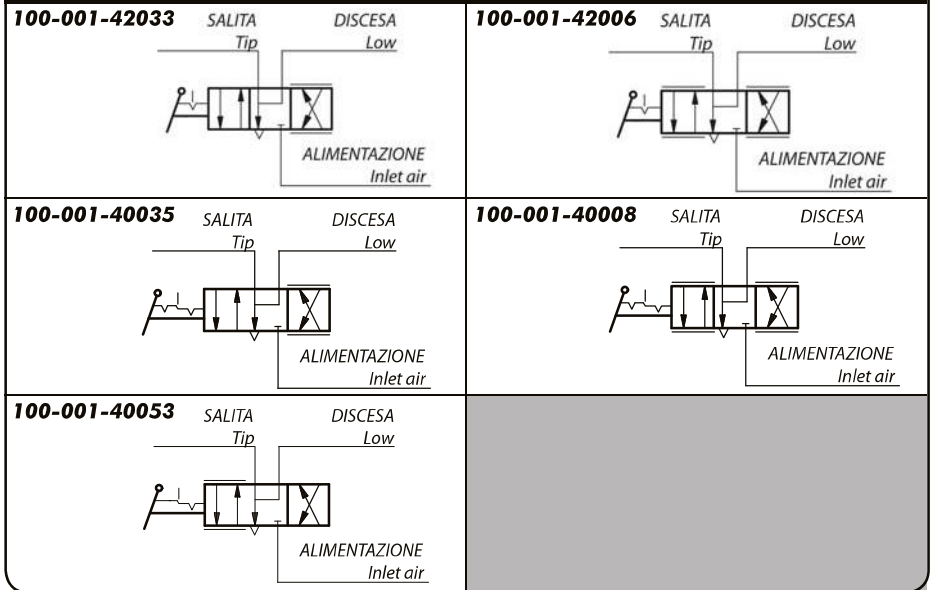
Codice fascicolo: 997-400-00075

Data: Venerdì 18 aprile 2014

Codice foglio: 997-100-00147 Rev: AC



## Schema di funzionamento/Functional diagram



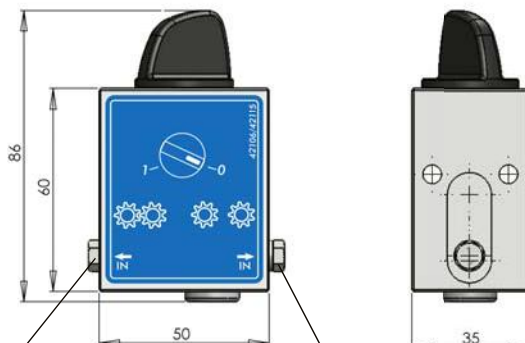
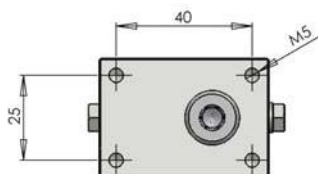
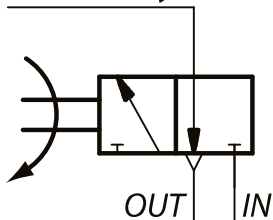
	Discesa proporzionale Proportional lowering	Salita/discesa proporzionale Proportional lowering/tipping	Pressioni Pressure values		Temperatura Temperature		
			Min.	Max.	Min.	Max.	
<b>Ritorno cloche</b> Lever return	<b>Automatico</b> Automatic "CE"	100-001-42033	100-001-42006	5 bar	12 bar	-30 °C	+80 °C
	<b>Manuale</b> Manual (con blocco salita/discesa) (with low and tip block)	100-001-40035	100-001-40008				
	<b>Manuale</b> Manual (con blocco discesa) (with low block)	100-001-40053					

**100-001-42106**

Deviatore pneumatico 3 vie 2 posizioni attacchi laterali.  
3 way & 2 position pneumatic controls with side ports

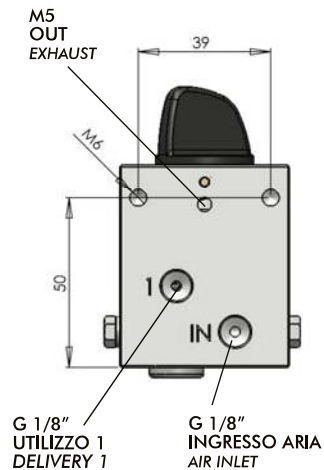
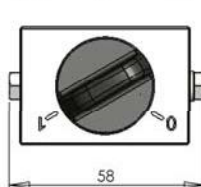


UTILIZZO 1  
Delivery 1



INGRESSO ARIA M5  
M5 AIR INLET

INGRESSO ARIA M5  
M5 AIR INLET

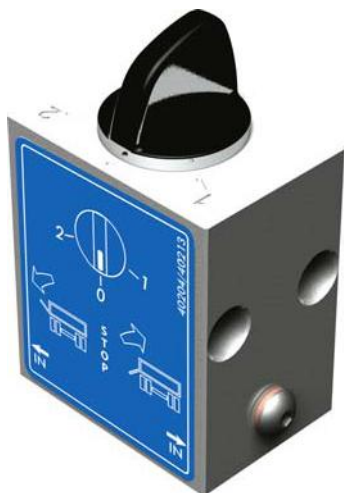


G 1/8" UTILIZZO 1  
DELIVERY 1

G 1/8" INGRESSO ARIA  
AIR INLET

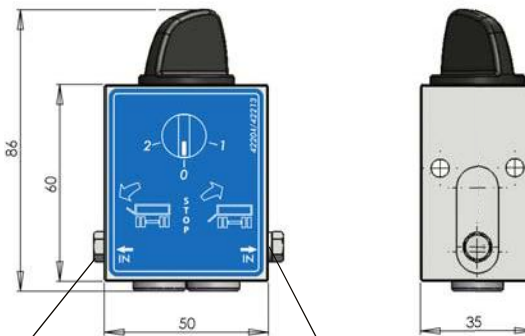
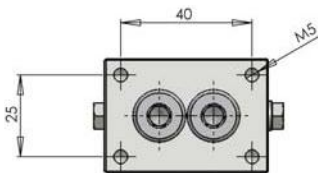
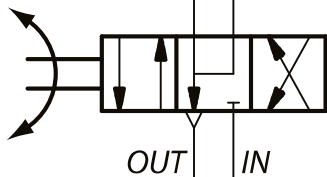
**100-001-42204**

Deviatore pneumatico 4 vie 3 posizioni attacchi laterali.  
4 way & 3 position pneumatic controls with side ports



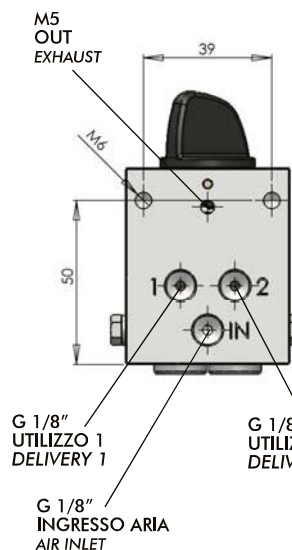
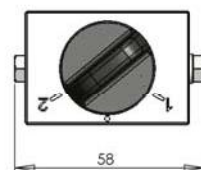
UTILIZZO 1  
Delivery 1

UTILIZZO 2  
Delivery 2



INGRESSO ARIA M5  
M5 AIR INLET

INGRESSO ARIA M5  
M5 AIR INLET



G 1/8" UTILIZZO 1  
DELIVERY 1

G 1/8" UTILIZZO 2  
DELIVERY 2

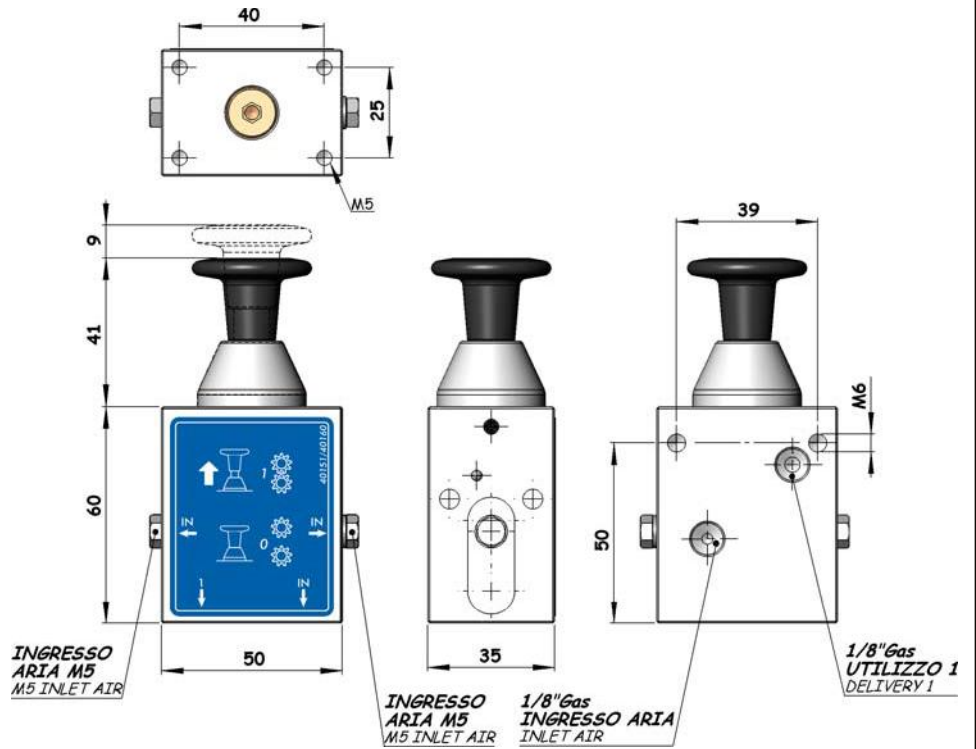
G 1/8" INGRESSO ARIA  
AIR INLET

Codice fascicolo: 997-400-00075

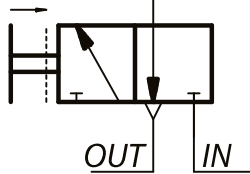


**100-001-40151**

Deviatore pneumatico 3 vie 2 posizioni attacchi laterali.  
3 way & 2 position pneumatic controls with side ports



UTILIZZO 1  
Delivery 1

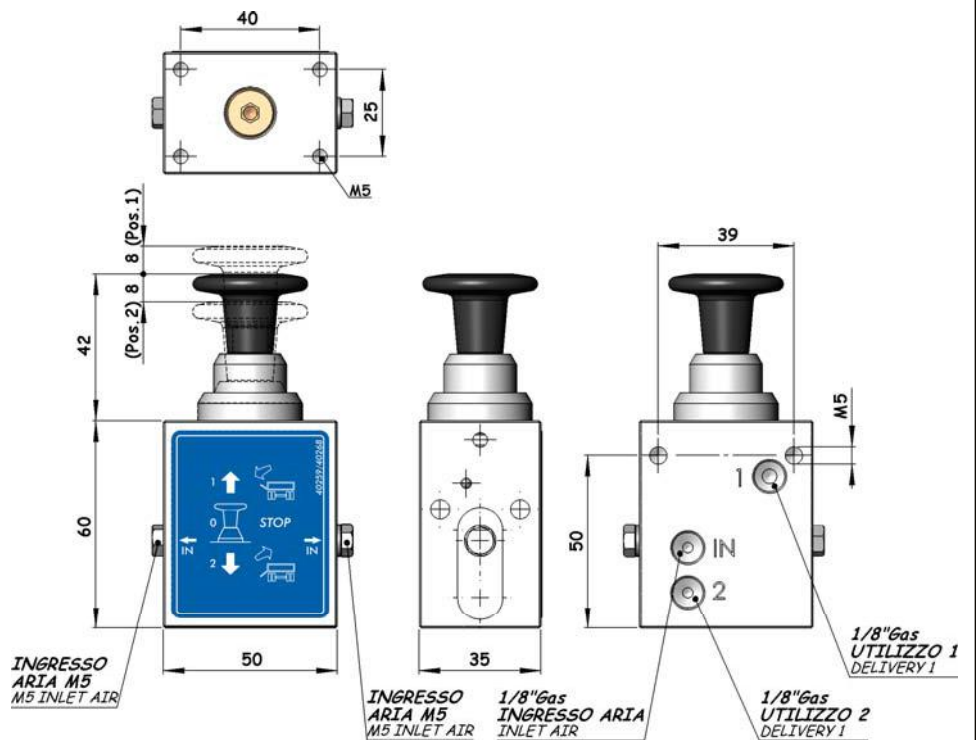


Data: Venerdì 18 aprile 2014

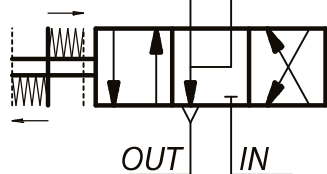


**100-001-40259**

Deviatore pneumatico 4 vie 3 posizioni attacchi laterali.  
4 way & 3 position pneumatic controls with side ports



UTILIZZO 1      UTILIZZO 2  
Delivery 1      Delivery 2



Codice foglio: 997-100-00147 Rev: AC